



www.altonart.org.uk

Printed by: Print@Treloar.org.uk

SUMMER NEWSLETTER JULY 2018

Contents: Chairman's Report. Winter Programme 2018/19 (incl Workshops)
AAS Painting Group Exhibition. Membership News. Outdoor painting day reports.
 ****Exhibition entry & instructions on line for email contact members. ****
 Membership cards enclosed for those who pay by standing order.
 Subscription renewal forms to all who do not pay by standing order.
 Also, exhibition posters & invitations.

CHAIRMAN'S REPORT - SUMMER 2018

Welcome to the Summer edition of our newsletter.

I would like to start by thanking a number of people. A special thanks to Margaret Crowe for stepping up to take on the role of Secretary when it was left unfilled after the AGM, also to all of the Committee for their ongoing commitment to the work of running the Society for us all.

GDPR legislation caused a flurry of extra work so thanks to Margaret, Annabel & Sally for working with me on that. Thanks too to all members who responded to our GDPR survey – we now have up to date records. I would encourage members to read the privacy policy viewable on the website or posted on request.



A huge thank you to Sonia and Sue for the wonderful painting days organised so far this summer – I hope you have been enjoying them as much as I enjoyed the plein air workshop day at Wyard's Farm with Mel Cambridge (left). Hot sunny weather, a group of friends, art materials to hand, a super workshop leader and a plethora of things to choose from, what more could we have asked for!



I anticipate lots of lovely pictures in this year's exhibition. Don't miss our last outdoor painting day on Aug 5th.

Hopefully many of you managed to pop in to the Allen Gallery for the Thursday Paint Group's exhibition in June. Well done to Kate and the group for such a fabulous show of paintings.

At the same time as this newsletter, you will be receiving information about the annual October exhibition by post. Please display the small posters where they get good exposure – a window of your car, the local village hall/shop notice board, anywhere to catch the eye of potential visitors.

As we have done for the last two years, nearer the time we will be asking for volunteers to have a board advertising the exhibition in front of their house for a few weeks leading up to and over the exhibition period. These boards not only publicise the exhibition, but also increase income to help fund it as the estate agents (Homes) pay the AAS per board for the mutual benefit – they also do all the work of putting up and taking down the boards, so you don't even need to be at home.

I have heard from a number of members offering support and I will be following up on those offers as we get busier towards the exhibition, so thank you for coming forward.

Finally a big thanks to Ginny who has taken on the Facebook page for the Society. The regular posting of information has given us more exposure to a wider audience. Members who don't use Facebook (like myself) can still view the page by clicking the link to Facebook on the AAS website – just click "No Thanks" if you get a pop-up asking if you want to sign up. It is well worth a look.

Kaye

Exhibition Notes:

Entry details should now be on the website and/or with your newsletter.
When we get closer to the Exhibition I will be calling on the membership to roll up their sleeves and pitch in. You don't have to be exhibiting to help out.

Anyone interested in finding out how it all comes together - by being in the thick of it - please drop an email to artaltonart@gmail.com with the subject "Exhibition Help".

There are always stewarding slots we need to fill during the exhibition and plenty to do beforehand. If you have specific roles/times you can be available and want to supply that information that will help.

I will not necessarily respond to emails immediately, but will put you on my volunteer list for nearer the time. Thank you, Kaye.

Be inspired, don't miss the deadlines, and get your entries ready for handing in on 5th October!

**THE PAINTING CHOSEN FOR OUR OCTOBER EXHIBITION POSTER HAS BEEN DECIDED –
CONGRATULATIONS TO KATE DAVIS ON HER WATERCOLOUR OF SNOWDROPS (see poster)**

**Winter Programme 2018/19 held at Alton Assembly Rooms, High St, Alton. GU34 1BA.
For those members who have paid their subscription and not received their membership card these will be available at the 16th September demonstration as detailed below.**

All demonstrations are held from 2.30pm – 4.30pm unless otherwise stated. The AGM on 16th March will begin at 2pm with Alison Board's demonstration following at 2.30pm.

15 Sept	Paul Simmons	Watercolour	Autumn Woodland
20 Oct	Will Dyke	Printing Workshop	TBA
17 Nov	John Randall	Gouache	Horse on black card
24 Nov	Max Hale (Workshop 10am-4pm)	Portraits	Four Marks Village Hall
15 Dec	Stephen Cheeseman	Acrylics	Abstract
19 Jan	Roger Dellar	Oils	
16 Feb	Paul Banning	Watercolour	Sunshine
16 Mar	AGM *** Alison Board	Mixed Media	
13 Apr	Rick Holmes (Workshop 10am-4pm)	Mixed Media	Four Marks Village Hall
Email/phone: Annabel Young – annabelyoung1@btinternet.com 01420 85553			

ADVERTISING OUR OCTOBER EXHIBITION.

Last year 20 of you came forward to have a 'HOMES' Estate Agents board advertising the exhibition, please step forward again. 'Homes' have agreed a further year with us and we are in the process of confirming that we will again get £10 for every board, up to a maximum of £200 for 20 boards, which will boost our funds considerably. SO PLEASE consider having a board outside your house? It will not cause any hassle and you need do nothing except agree... the boards will be put up a week or two before the start of the Exhibition and magically disappear the Monday after it ends. Ideally we would like to provide Homes with a list of more than 20 addresses willing to have a board. They will then use their knowledge of the area to select the 20 that they believe will provide us both with the maximum coverage, ie; encourage more visitors to our Exhibition and to promote 'HOMES'. If you would be happy to have a board please send your details to Mary Vivian who has kindly agreed to co-ordinate this again.



maryvivian33@gmail.com or call Mary on 01420-88033 for more information.

Membership News:

We are very pleased to welcome three new members to our Society:

Anna Morson – Alton. Anita Plummer – Basingstoke. Margaret Jerome – Beech.

We look forward to meeting you at our various events this year.

When you renew your membership a s.a.e. with your cheque/bank mandate would be appreciated for your membership card to be sent to you.

Ann Sayer Membership Secretary

Phone: 01420 84526 email: roseanne8SAY@aol.com





CHAWTON HOUSE LIBRARY GARDENS
TUESDAY 15 MAY Artists enjoyed the peace and tranquillity of these wonderful late 18th century landscape style gardens with lawns, open views across the estate, a lime avenue with distant views across the South lawn to the parkland beyond, a wooded area, two terraces, a walled kitchen garden with herb garden, a fernery and shrubbery.

Painting taken from 'History of Alton Art Society'.

Painted by John Hearn-AAS Chairman Ret'd ©



WEST GREEN HOUSE GARDENS OUT DOOR PAINTING DAY: Artists enjoyed a beautiful sunny day in these exquisite gardens of contrast and imagination, created by the Australian garden designer, Marilyn Abbott. Everyone took advantage of the scenic views across the gardens and Lakefield and the Paradise Water Gardens.

There were many opportunities to paint all the aspects of these beautiful gardens. Photographs were taken to follow up with their paintings when they returned home.

Sonia Hennelly

En Plein Air Painting Day with Mel Cambridge

18 members met at Wyards Farm on a very hot and sunny day.

Mel started the day with sketching tips before the painters had a chance to put them into practice on a guided walk round the extensive farm site. Mel then demonstrated the start of an oil painting of an area that had caught her eye; a working area of the garden with a hosepipe hanging on a hook by a gate, a greenhouse and a narrow curving path leading to the rest of the garden. An artist had set up to paint the same area so



was included in the painting (right).

After the demonstration artists went to their favourite spot, although this was dictated by where there was shade. During the day Mel sought us out, offering tips on composition and how to improve our work as well as adding to her own painting.

Before we left we met together to show our work and have it critiqued by Mel who gave valuable advice on what worked

well, what would have improved the composition and how we could improve the paintings once we got home. The work was very varied, not only in subject but medium. Mel showed her painting and explained how she planned to change various parts of it, including the hosepipe which had first attracted her.



Demonstration painting of Mary J.



Alternative Packaging have extended their range of art materials.

You can find them at a small industrial area behind Waitrose GU34 2PT

Last unit on right. Car parking space outside

10% Discount to AAS Members

Tel: David-01420 544800

CHAWTON ART GROUP:
Have a few vacancies

for any members who might be interested in joining our group.

Held at Chawton Village Hall

On Thursdays. 1pm – 4pm please call in and meet us.

Any enquiries to Eileen Watson

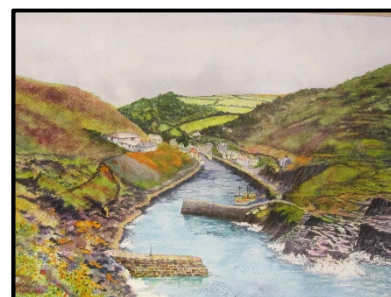
Tel: 01420 562515

AAS Paint Group June 2018 Allen Gallery Exhibition 'GROUP RETROSPECTIVE 2'



This was the second main room exhibition the AAS Paint Group has presented at the Allen Gallery, the first was in 2016, after having dipped a toe in the water by putting an exhibition in the café area in 2015.

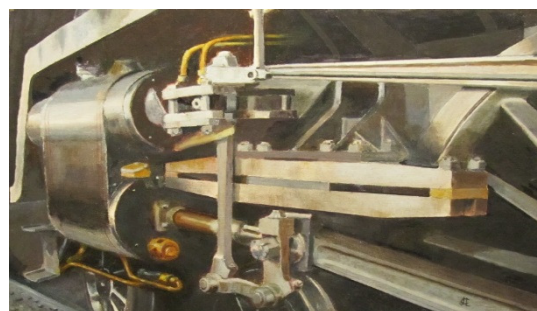
Fortuitously, at the last minute, the person who was to occupy the Café space in June dropped out and we were offered the whole of the Allen Gallery display areas to hang in. This very much worked to our advantage as it meant that rather than displaying each artist's work using the full height of the wall space, the exhibition could spread out, hung linearly, which viewed a lot better as a show. The contrasting



styles and subject matter of each of the artists made for a very varied and strong display. The Allen Gallery were very pleased indeed with it.

There were 14 AAS Paint Group members involved in the show, showing both artwork and demonstrating on site on various days during the month (including new member Anita Plummer who started the

demonstrations off), and for some this was their first ever public showing of their artwork. Visitors were very complimentary about the exhibition and there were sales too of hung work, folios and cards.



Kate Davis

The above paintings are a few of those exhibited at the Allen Gallery:

Top Left 'Catatumbo Lightning' Barry King. Upper Right 'Church St Alton' Adrian Bone

Centre Left: 'Striding Edge' Jan Offer.

Centre Right: 'Boscastle Harbour' Mike Downs

Below Left: 'Kettle Reflection' Helen Dye.

Below Right: 'Steam Engine' Jim Cavanagh.

The AAS Paint Group meet every Thursday at the Malting's, Alton (Except August). Free car Parking. 1pm-4pm (flexible) Wilberforce Room (downstairs), lift available if you have a lot to carry.

Phone Kate: 01420 543458 for information.

For greeting cards
And prints of your paintings.

[Jerry Cullum/Megan Reid](mailto:jerry.cullum@meganreid.co.uk)

print@treloar.org.uk

Telephone: 01420 547424

Highly recommended by members.
Take a photograph of your painting
and email

to Jerry Cullum (above)

A proof will be provided before
ordering

Fine Framing

4 Weyside Park, Newman Lane, Alton
GU34 2PJ

Offers 10% Discount to all fully paid
up AAS members. Membership card
for 2018/19 must be available
Discount applies to picture framing
for new frames only.

Contact Steve Cook: 01420 82324
www.fineframing.co.uk

Please contact Ann Sayer (Editor) if you have anything you would like entered in the next newsletter (Nov). Email: roseanne8SAY@aol.com Tel: 0142084526 closing date 5th Nov.
See the AAS Website for updates. The Editor's decision is final for all entries.

